

Detritus and Architecture 1/2

WHILE WE WAIT - NUCLEAR WASTE FACILITY RISØ, DENMARK

Peter Ravnborg

Schools of Architecture, Design and Conservation, The Royal Danish Academy of Fine Arts, Denmark

This project addresses issues associated with the disposal of Danish nuclear waste generated during the operations and decommissioning of the Risø Research Centre. The issue is highly relevant in view of the alarm created by current storage of the waste at Risø. Due to the poor condition of the concrete canisters containing the radioactive waste, a decision as to how best to manage the waste is a priority matter. The most appropriate solution would be represented by use of a depot: a building complex developed to house and encase the radioactive waste for several future generations. The depot would represent a unique structure, the distinctive and mysterious function of which would undoubtedly generate a great deal of debate. The project is a concrete idea of how disposal can be incorporated into an extended societal context. Storage of radioactive substances is a global problem frequently associated with strong feelings. By addressing the issue from an architectural point of view, hopefully a humane dimension can be conveyed to a highly inhumane subject,

and potentially result in the erection of a monument that gives something back to its surroundings rather than acting as an unpleasant burden.

Realisation of the project would be intended to transform a social taboo into an attraction, a monument that represents a Danish model for an intermediate storage facility. A model achieved as a result of skilful interaction between mankind and nature. Denmark has never deployed nuclear energy as part of its energy supply, thus, the quantity of waste involved is relatively small. This situation consequently represents an ideal starting point from which to initiate a debate relating to a modern view of disposal. The problem is a global issue; indeed, although on a different scale, the project concept will be of global relevance. Architects should be bold enough to face and take on tasks such as this! Although indeed the task at hand comprises a considerable number of practical, structural and engineering challenges, it likewise represents an issue that conveys a substantial poetic dimension.



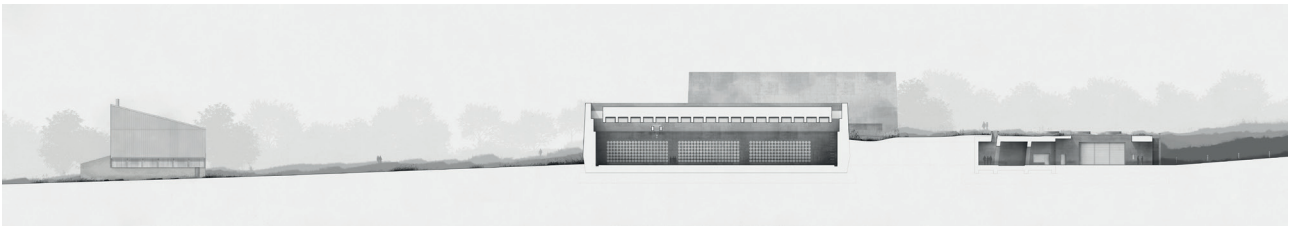
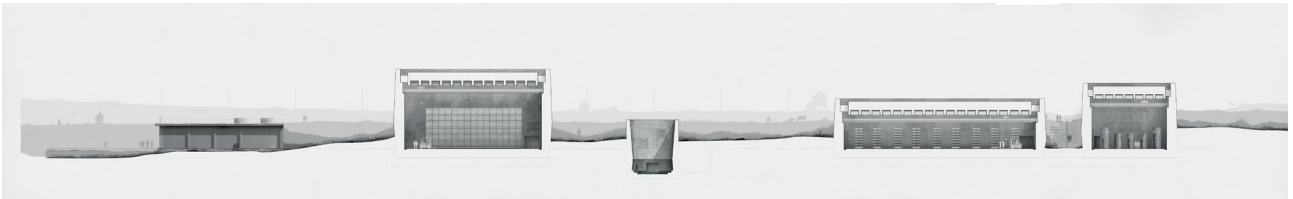
Landscape room



Site plan



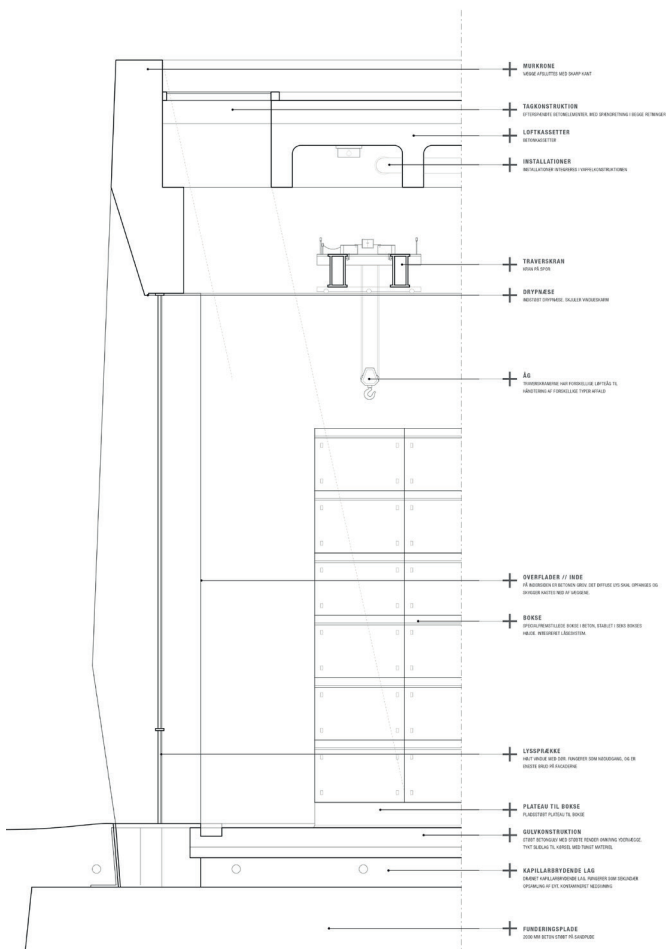
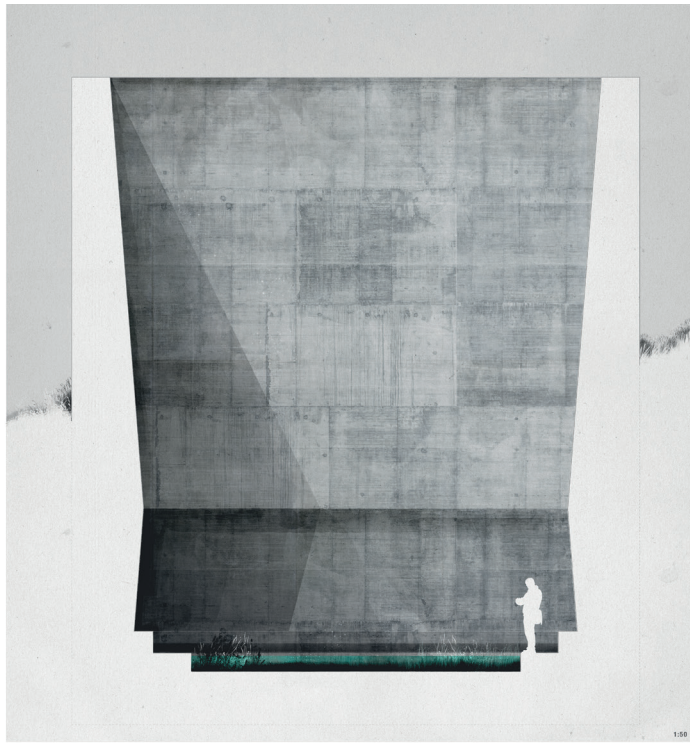
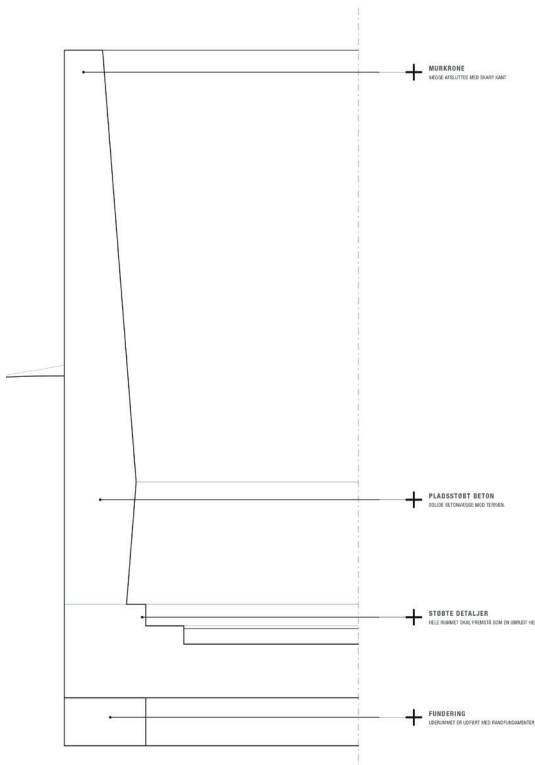
Depots in the landscape



Sections



The depot - boxes



Construction details



The depot - canisters



Walk towards the light / Visualisation of the small subterranean outdoor space

Peter Ravnborg

Peter Ravnborg graduated from The Royal Danish Academy of Architecture in early 2016. Following his graduation he worked as an Architect at Lundgaard & Tranberg | Copenhagen, designing large scale buildings. In 2019 he set up

his own studio, Hald & Ravnborg to focus primarily on the small scale creation of high-quality designs with a subtle, yet significant, character.

Peter Ravnborg, Denmark
email: peterravnborg@gmail.com